

endoret[®] (prgf[®])

Endogenous Regenerative Technology

ORAL SURGERY



www.endoret.com



LEADER IN REGENERATIVE MEDICINE

BTI Biotechnology Institute is a Spanish biomedicine company focused on the development of translational research projects (R&D+i).

BTI is a world-level scientific leader in regenerative medicine using ENDORET in different fields of medicine.

**MORE THAN 5000 M² DEVOTED TO TRAINING,
CLINICAL PRACTICE AND RESEARCH**

TRAINING

**WE TRAIN IN ORDER TO OPTIMISE
THE CLINICAL RESULTS**

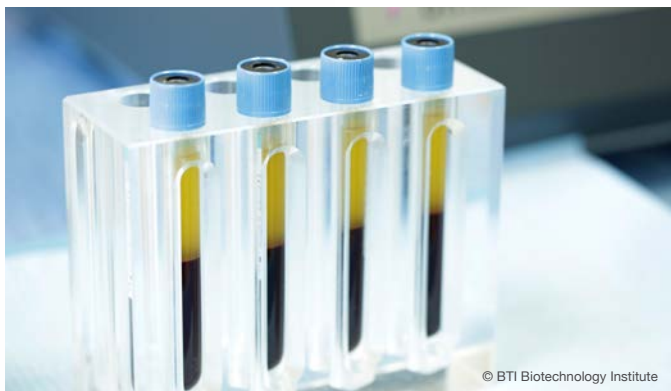
Specific training aimed at different medical specialisations.

More than 40 scientific collaboration agreements with universities and research institutes all over the world.

More than **1200 students** per year of all nationalities.

CLINICAL PRACTICE

TRANSLATIONAL RESEARCH:
KNOWLEDGE ACQUIRED IN THE
LABORATORY APPLIED TO CLINICAL
PRACTICE



© BTI Biotechnology Institute

Collaboration with experts from different countries
in different fields of medicine for the development of
clinically effective protocols.

RESEARCH

MORE THAN 100 INDEXED
SCIENTIFIC PUBLICATIONS
BACK THE EFFECTIVENESS AND
BIOSAFETY OF ENDORET®

20% of the workforce dedicated to research.

More than **15 years of research** in tissue regeneration.



© BTI Biotechnology Institute

ENDORET® TECHNOLOGY

1 WHAT IS IT?

ENDORET® IS A BIOMEDICAL TECHNOLOGY AIMED AT STIMULATING TISSUE REGENERATION BY APPLYING AUTOLOGOUS PROTEINS.

© BTI Biotechnology Institute

Hundreds of endogenous proteins affect the tissue repair processes, including angiogenesis, chemotaxis and cell proliferation. No exogenic agent can effectively govern all these processes. ⁽¹⁾

Endoret technology provides the necessary means for the isolation and concentration of the blood proteins involved in tissue regeneration, as well as its suitable application at the injury site. ⁽²⁾

(1) Anitua E, Sánchez M, Orive G, Andia I. Delivering growth factors for therapeutics. *Trends Pharmacol Sci.* 2008;29:37-41.

(2) Anitua E. Plasma rich in growth factors: preliminary results of use in the preparation of future sites for implants. *Int J Oral Maxillofac Implants.* 1999;14:529-535.

(3) Anitua E, Sánchez M, Zalduendo MM, de la Fuente M, Prado R, Orive G, Andia I. Fibroblastic response to treatment with different preparations rich in growth factors. *Cell Prolif.* 2009;42:162-170.

(4) Anitua E, Sánchez M, Nurden AT, Zalduendo M, de la Fuente M, Orive G, Azofra J, Andia I. Autologous fibrin matrices: a potential source of biological mediators that modulate tendon cell activities. *J Biomed Mater Res A.* 2006;77:285-293.

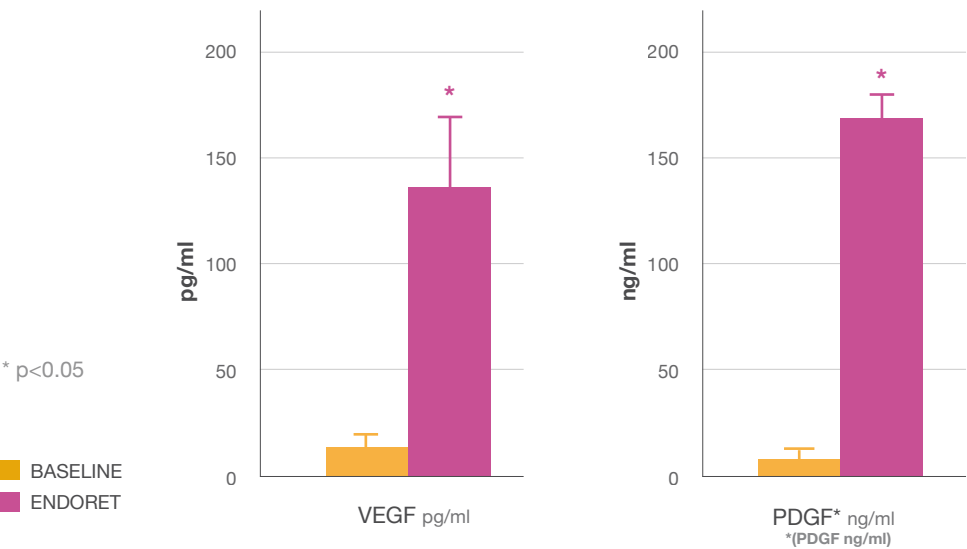
(5) Anitua E, Zalduendo MM, Alkhraisat MH, Orive G. Release kinetics of platelet-derived and plasma-derived growth factors from autologous plasma rich in growth factors. *Ann Anat.* 2013.

2 ACTIVE PRINCIPLE

A. GROWTH FACTORS

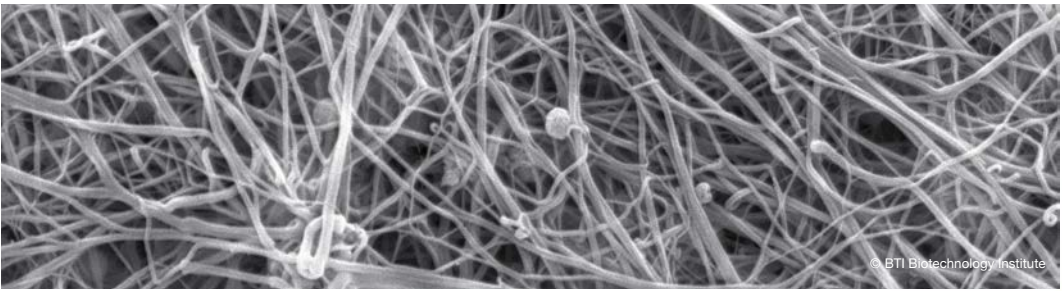
ENDORET stimulates tissue regeneration due to its content in growth factors, in greater concentrations than those of blood. ⁽³⁾

QUANTIFICATION OF THE INCREASE IN VEGF (VASCULAR ENDOTHELIAL GROWTH FACTOR) AND PDGF (PLATELET DERIVED GROWTH FACTOR)



B. FIBRIN MEMBRANE

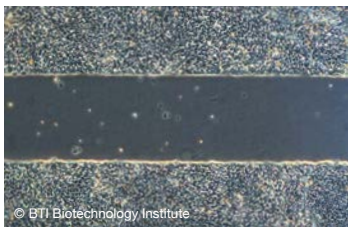
Enables the balanced and gradual release of a large number of molecules, including growth factors and other proteins. ^{(4) (5)}



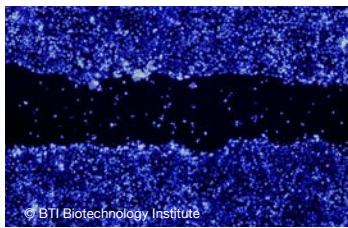
3 MECHANISMS OF ACTION

1. Promoting **angiogenesis** ⁽⁶⁾
2. Stimulating **cell migration** ⁽⁷⁾
3. Increasing the **proliferation** ^{(8) (9) (10)}
4. Decreasing **inflammation and pain** ⁽¹¹⁾
5. Stimulating **autocrine and paracrine secretion of growth factors** ^{(8) (9) (10)}

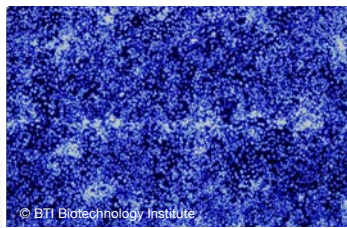
ENDORET ACCELERATES CELL MIGRATION FOR REGENERATIVE PURPOSES ⁽⁶⁾



INITIAL STATUS (0H.)



CONTROL (24H.)



ENDORET® (24H.)

ENDORET TECHNOLOGY® REDUCES THE TISSUE REPAIR TIME ^{(12) (13)}



SCAN THE CODE WITH
YOUR SMARTPHONE
TO WATCH THIS
VIDEO

RESPONSE OF THE TISSUE



(6) Anitua E, Alkhraisat MH, Orive G. Perspectives and challenges in regenerative medicine using plasma rich in growth factors. J. Control Release 2012;157(1): 29-38.

(7) Anitua E, Troya M, Orive G. Plasma rich in growth factors promote gingival tissue regeneration by stimulating fibroblast proliferation and migration and by blocking transforming growth factor-β1-induced myodifferentiation. J Periodontol. 2012 Aug;83(8):1028-37. doi: 10.1902/jop.2011.110505. Epub 2011 Dec 6.

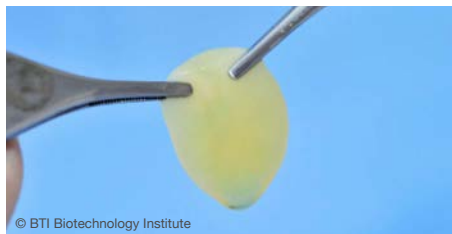
(8) Anitua E, Troya M, Orive G. Plasma rich in growth factors promote gingival tissue regeneration by stimulating fibroblast proliferation and migration and by blocking transforming growth factor-β1-induced myodifferentiation. J. Periodontol. 2012;83(8):1028-37.

4 THERAPEUTIC FORMULATIONS

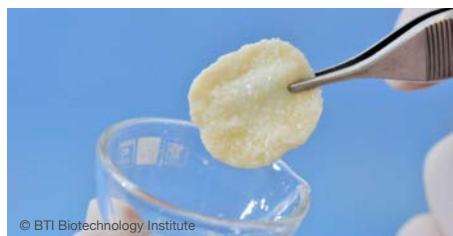
With Endoret technology we can make **4 different therapeutic formulations** and adapt them to the different clinical goals. ⁽¹⁴⁾



1. LIQUID



2. CLOT



3. AGGLUTINATING A GRAFT
WITH BIOMATERIAL



4. FIBRIN MEMBRANE

5 SAFETY

Autologous product, there are no incompatibilities **nor risk of rejection.**

All the formulations of ENDORET have a **bacteriostatic effect**, especially during the 4 hours after application. ⁽¹⁵⁾

More than 700,000 patients have been treated in more than 20 countries, **without any adverse effects being reported.**

(9) Anitua E, Tejero R, Zalduendo MM, Orive G. Plasma Rich in Growth Factors (PRGF-Endoret) Promotes Bone Tissue Regeneration by Stimulating Proliferation, Migration and Autocrine Secretion on Primary Human Osteoblasts. *J. Periodontol.* 2012 Oct 22. doi:10.1902/jop.2012.120292

(10) Anitua E, Troya M, Orive G. An Autologous Platelet Rich Plasma Stimulates Periodontal Ligament Regeneration. *J. Periodontol.* 2013 Jan 5. doi:10.1902/jop.2013.120556

(11) Bendinelli P, Matteucci E, Dogliotti G, Corsi MM, Banfi G, Maroni P, Desiderio MA. Molecular basis of anti-inflammatory action of platelet-rich plasma on human chondrocytes: mechanisms of NF- κ B inhibition via HGF. *J Cell Physiol.* 2012;225:757-766.

(12) Sánchez M, Anitua E, Azofra J, Andía I, Padilla S, Mujika I. Comparison of surgically repaired Achilles tendon tears using platelet-rich fibrin matrices. *Am J Sports Med.* 2007;35:245-251.

(13) Anitua E. Plasma rich in growth factors: preliminary results of use in the preparation of future sites for implants. *Int J Oral Maxillofac Implants.* 1999;14:529-535.

(14) Anitua E, Sánchez M, Orive G, Andía I. The potential impact of the preparation rich in growth factors (PRGF) in different medical fields. *Biomaterials.* 2007;28:4551-4560.

(15) Anitua E, Alonso R, Girbau C, Aguirre JJ, Muruzabal F, Orive G. Antibacterial effect of plasma rich in growth factors (PRGF) against *Staphylococcus aureus* and *epidermidis* strains. *Clin Exp Dermatol.* 2012.

APPLICATIONS

OF ENDORET TECHNOLOGY®

IN IMPLANTOLOGY

1

INCREASED PREDICTABILITY

THE USE OF ENDORET SIGNIFICANTLY INCREASES THE SUCCESS RATE IN TREATMENTS WITH DENTAL IMPLANTS.

(16)(17)(18)

When the surface of the implants is wet with ENDORET liquid a fibrin membrane is formed that adheres to the surface of the implant and releases growth factors and improves the osseointegration.

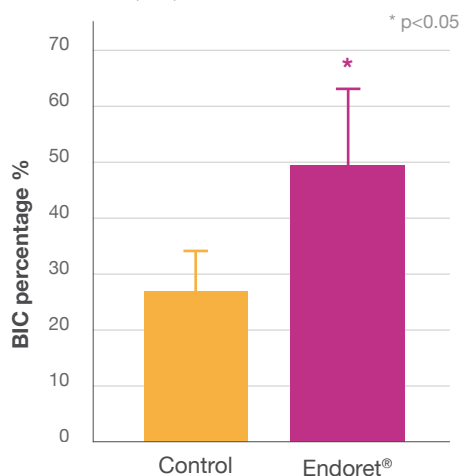
The nano-rough surface of BTI implants is specially designed to boost the biological effects of ENDORET.

WETTING WITH ENDORET INCREASED THE TRABECULAR THICKNESS AND MATURITY OF THE BONE

SURVIVAL RATES REPORTED IN PROSPECTIVE TRIALS:

- **5-year follow-up study** ·
5787 implants. **99.2%** ⁽¹⁶⁾
- **5-year follow-up study** ·
1139 immediate load implants. **99.3%** ⁽¹⁷⁾
- **8-year follow-up study** ·
1287 short implants. **99.3%** ⁽¹⁸⁾
- **10-12-year follow-up study** ·
111 short implants. **98.9%** ⁽¹⁹⁾

HISTOMORPHOMETRIC EVALUATION OF THE BONE-IMPLANT CONTACT SURFACE (BIC) AFTER TWO MONTHS



(16) Anitua E, Orive G, Aguirre JJ, Ardanza B, Andía I. 5-year clinical experience with BTI dental implants: risk factors for implant failure. *J Clin Periodontol*. 2008 Aug;35(8):724-32.

(17) Anitua E, Orive G, Aguirre JJ, Andía I. Clinical outcome of immediately loaded dental implants bioactivated with plasma rich in growth factors: a 5-year retrospective study. *J Periodontol*. 2008 Jul;79(7):1168-76.

(18) Anitua E, Orive G. Short implants in maxillae and mandibles: a retrospective study with 1 to 8 years of follow-up. *J Periodontol*. 2010;81:819-826.

(19) Anitua E, Piñás L, Begoña L, Orive G. Long-term retrospective evaluation of short implants in the posterior areas: Clinical results after 10-12 years.. *J Clin Perio* 2013 (In progress).

2 TREATMENT OF ALVEOLUSES POST-EXTRACTION

The application of PRGF®-Endoret® in the treatment of alveoluses post-extraction reduces inflammation and pain, **accelerates the epithelisation** of soft tissues and **promotes bone regeneration**.^{(20) (21) (22)}

The survival rate of an implant placed in an alveolus post-extraction immediately is 98%, and is a safe, effective and predictable treatment.⁽²³⁾

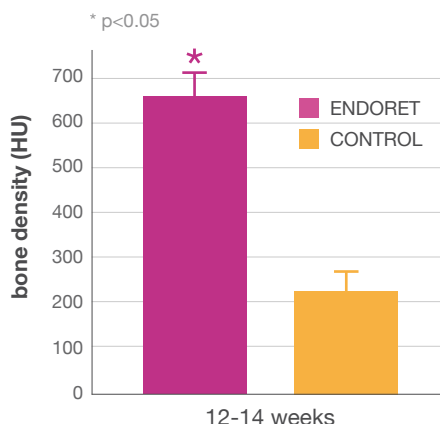
ENDORET®-PRGF®



1ST DAY
EXTRACTION AND PLACEMENT OF ENDORET®-PRGF®.



15 DAYS
PRIMARY CLOSURE OF THE ALVEOLUS AFTER 15 DAYS.

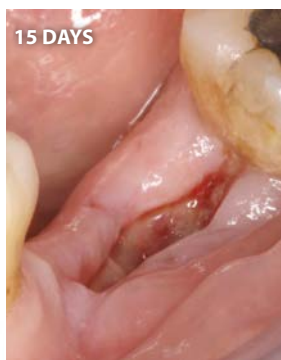


TREATMENT SCHEDULES OF AN ALVEOLUS POST-EXTRACTION

CONTROL



1ST DAY
DEFECT AFTER THE DENTAL EXTRACTION .



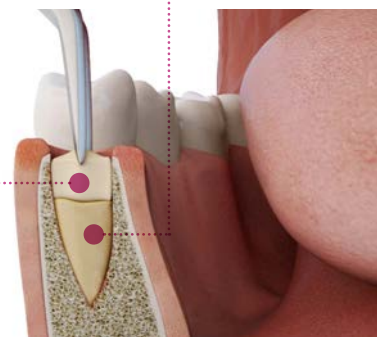
15 DAYS
EPITHELIALISATION AFTER 15 DAYS PRIMARY CLOSING HAS NOT BEEN ACHIEVED AND THE THICKNESS OF THE KERATINISED GUM IS LOWER.

FRACTION 1

Fibrin membrane

FRACTION 2

Clot



(20) Anitua E. Plasma rich in growth factors: preliminary results of use in the preparation of future sites for implants. *Int J Oral Maxillofac Implants*. 1999 Jul-Aug;14(4):529-35.

(21) Anitua E. The use of plasma-rich growth factors (PRGF) in oral surgery. *Pract Proced Aesthet Dent*. 2001 Aug;13(6):487-93; quiz 487-93.

(22) Anitua E, Alkhraisat M, Orive G, Murias A. A randomized clinical trial evaluating plasma rich in growth factors (Endoret) in the treatment of post-extraction mandibular molars. *Clin Oral Impl Res* 2013;24 (Suppl. 9): 192.

(23) Del Fabbro M, Boggian C, Taschieri S. Immediate implant placement into fresh extraction sites with chronic periapical pathologic features combined with plasma rich in growth factors: preliminary results of single-cohort study. *J Oral Maxillofac Surg*. 2009 Nov;67(11):2476-84.

3 REDUCED RISK OF OSTEONECROSIS

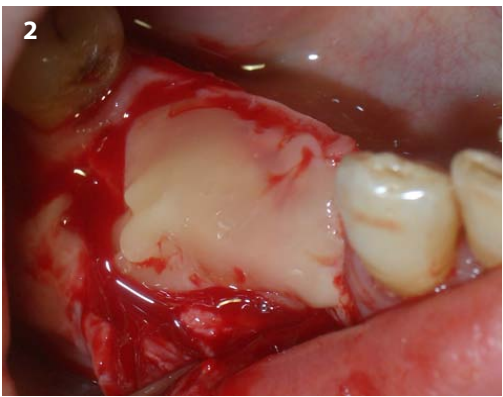
Treatment with ENDORET after resecting the necrotic bone increases the activity of the osteoclasts and causes angiogenesis, which can be used as an **adjuvant for patients with BRONJ**.⁽²⁴⁾

The results of various studies suggest that treatment with ENDORET can **lessen the risk of developing BRONJ after a dental extraction** in high-risk patients in treatment with bisphosphonates.^{(25) (26)}

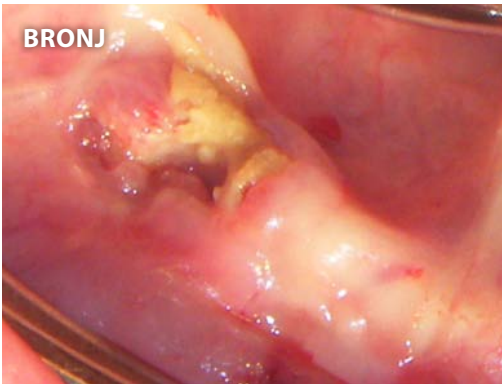
Treatment	Number of extractions	Osteonecrosis of the maxilla
Control	267	5
Endoret®-PRGF®	542	0

CLINICAL TRIAL OF THE PREVENTION OF BISPHOSPHONATE-ASSOCIATED OSTEONECROSIS OF THE JAW (BRONJ)

ENDORET®-PRGF®



CONTROL



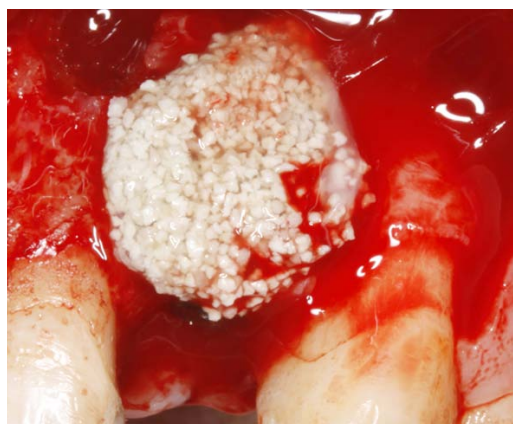
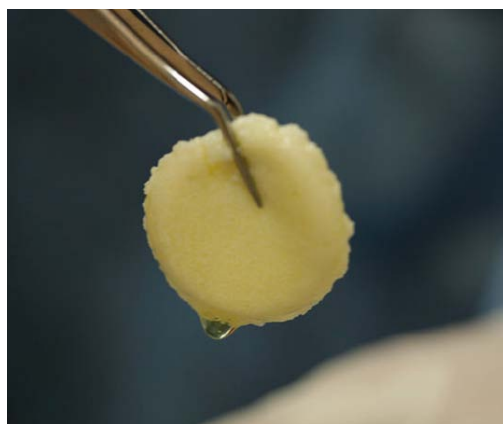
4 ENDORET® IN THE TREATMENT OF BRONJ

Endoret was effective in the surgical treatment of bisphosphonate-associated osteonecrosis of the jaw, achieving closure of the defect in 32 patients in a prospective study.⁽²⁷⁾

Endoret restored the function of the inferior dental nerve affected by the BRONJ lesion.⁽²⁷⁾

5 PREPARATION OF GRAFTS

ENDORET can be used to agglutinate biomaterial, making it easier to handle and improving its osteoconductive and biological properties, in both heterologous and autologous grafts.^{(28) (29) (30)}



(24) Mozzati M, Galesio G, Arata V, Pol R, Scoletta M. Platelet-rich therapies in the treatment of intravenous bisphosphonate-related osteonecrosis of the jaw: a report of 32 cases. *Oral Oncol.* 2012 May;48(5):469-74.

(25) Mozzati M, Arata V, Galesio G. Tooth extraction in patients on zoledronic acid therapy. *Oral Oncol.* 2012 Sep;48(9):817-21

(26) Scoletta M, Arata V, Arduino PG, Lerda E, Chiecchio A, Galesio G, Scully C, Mozzati M. Tooth extractions in intravenous bisphosphonate-treated patients: a refined protocol. *J Oral Maxillofac Surg.* 2013 Jun;71(6):994-9.

(27) Anitua E, Begoña L, Orive G. Treatment of hemimandibular paresthesia in a patient with bisphosphonate-related osteonecrosis of the jaw (BRONJ) by combining surgical resection and PRGF-Endoret. *Br J Oral Maxillofac Surg.* 2012 Nov 30;doi:pii: S0266-4356(12)00585-2.

(28) Anitua E, Carda C, Andia I. A novel drilling procedure and subsequent bone autograft preparation: a technical note. *Int J Oral Maxillofac Implants.* 2007 Jan-Feb;22(1):138-45.

(29) Anitua E, Prado R, Orive G. Bilateral sinus elevation evaluating plasma rich in growth factors technology: a report of five cases. *Clin Implant Dent Relat Res.* 2012 Mar;14(1):51-60.

(30) Taschieri S, Corbella S, Del Fabbro M. Use of plasma rich in growth factor for schneiderian membrane management during maxillary sinus augmentation procedure. *J Oral Implantol.* 2012 Oct;38(5):621-7.

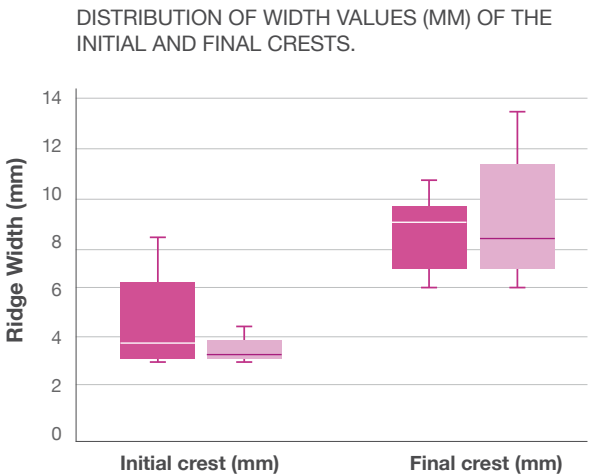
6 TREATMENT OF MAXILLAR ATROPHY

ENDORET improves the tissue regeneration and its versatility means it can be used in various surgical techniques.

A. LATERAL BONE INCREASE

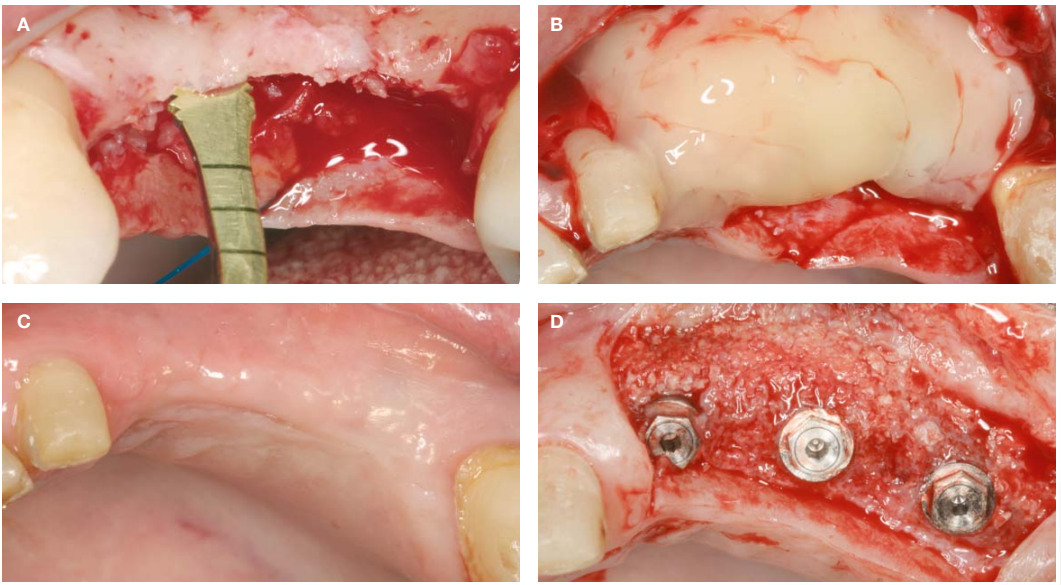
The crestal expansion and crestal split techniques in two stages combined with ENDORET treatment can achieve an average bone expansion of 3.35 mm.⁽³¹⁾

■ Apical
■ Occlusal



The use of Endoret in combination with the block graft improves the healing of the flap, avoiding the exposure of the graft and improves the post-operative outlook of the patient.

TWO-STAGE CRESTAL SPLIT TREATMENT



A) LONGITUDINAL CORTICOTOMY WITH ULTRASOUND B) USE OF BONE GRAFTS AND FIBRIN MEMBRANES C) EPITHELISATION AFTER 3 MONTHS D) REOPENING AFTER 3 MONTHS

B. SINUS ELEVATION

ENDORET reduces inflammation and pain. It increases the bone formed and maintains the survival of the bone cells.⁽²⁹⁾

ENDORET is effective in the treatment of perforations in the Schneider membrane⁽³³⁾



SPLIT-MOUTH STUDY OF ENDORET VS. CONTROL IN A SINUS ELEVATION PROCEDURE WITH A LATERAL APPROACH. ⁽³²⁾



CONTROL TREATMENT



TREATMENT WITH ENDORET®

ENDORET® INCREASES THE
REVASCULARISATION OF THE BONE GRAFT
AND THE FORMATION OF MATURE BONE

(31) Anitua E, begoña L, Orive G. Controlled ridge expansion using a two – stage split – crest technique with ultrasonic bone surgery. *Implant Dent.* 2012 Jun; 21(3): 163 – 170

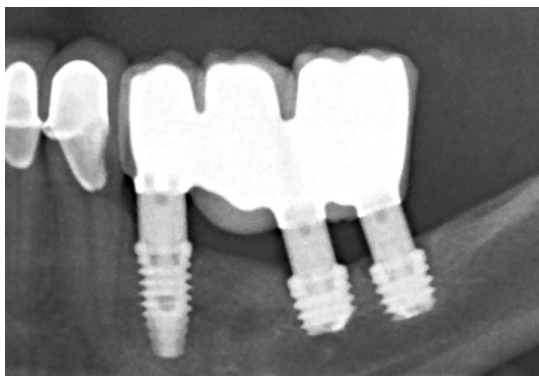
(32) Anitua E, Prado R, Orive G. Bilateral sinus elevation evaluating plasma rich in growth factors technology: a report of five cases. *Clin Implant Dent Relat Res.* 2012 Mar;14(1):51-60.

(33) Taschieri S, Corbella S, Del Fabbro M. Use of plasma rich in growth factor for schneiderian membrane management during maxillary sinus augmentation procedure. *J Oral Implantol.* 2012 Oct;38(5):621-7.

(34) Anitua E, Murias-Freijo A, Alkhraisat MH, Orive G. Implant-guided vertical bone augmentation around extra-short implants for the management of severe bone atrophy. *J Oral Impl.* 2013 (in progress).

C. VERTICAL BONE REGENERATION

The combination of Endoret treatment with short and extra-short implants makes **restorations in atrophic crests** possible without needing to resort to more aggressive techniques. ⁽³⁴⁾⁽³⁵⁾⁽³⁶⁾⁽³⁷⁾



7 PERIODONTAL REGENERATION

ENDORET may be an alternative to the use of dermal material used in the field of the mucogingival surgery.



TREATMENT OF GINGIVAL DEFECTS

Endoret achieves favourable results in terms of radicular cover and gain in clinical insertion. In addition, it increases the width of keratinised tissue and corrects recession. ⁽³⁸⁾⁽³⁹⁾

(34) Anitua E, Murias-Freijo A, Alkhraisat MH, Orive G. Implant-guided vertical bone augmentation around extra-short implants for the management of severe bone atrophy. *J Oral Impl.* 2013 (in progress).

(35) Torres J, Tamimi F, Alkhraisat MH, et al. Platelet-rich plasma may prevent titanium-mesh exposure in alveolar ridge augmentation with anorganic bovine bone. *J Clin Periodontol.* 2010 Oct;37(10):943-51.

(36) Anitua E, Alkhraisat MH, Orive G. Novel technique for the treatment of the severely atrophied posterior mandible. *Int J Oral Maxillofac Implants.* 2013 Sep-Oct;28(5):1338-46.

(37) Anitua E, Murias-Freijo A, Alkhraisat MH, Orive G. Implant-guided vertical bone augmentation around extra-short implants for the management of severe bone atrophy. *J Oral Impl.* 2013 (in press).

(38) Anitua E, Murias-Freijo A, Alkhraisat MH, Begoña L, Orive G. Plasma rich in growth factors (PRGF-Endoret) associated with connective tissue grafts in the treatment of gingival recessions. *Europerio* 7, June 6-12, 2012, Vienna, Austria Lafzi et al. *J*

(39) Lafzi A, Faramarzi M, Shirmohammadi A, Behroozian A, Kashefimehr A, Khashabi E. Subepithelial connective tissue graft with and without the use of plasma rich in growth factors for treating root exposure. *J Periodontal Implant Sci.* 2012 Dec;42(6):196-203.

COMPONENTS OF ENDORET TECHNOLOGY®

1 ENDORET® DISPOSABLE KIT SINGLE-USE KIT*

* MEDICAL DEVICES CERTIFIED FOR APPLICATION IN THE REGENERATION OF SOFT AND HARD TISSUES
FOR ORAL SURGERY BY THE NOTIFIED BODY

KMU15 KIT

- 4 extraction tubes
- 2 fractioning tubes
- 1 ampoule of activator
- 1 activation syringe
- 1 PTD 2
- 1 winged blood collection set
- 5 identification labels

IN EACH KMU15, ONE BLISTER PACK
OF ADDITIONAL MATERIAL WITH:

- 8 extraction tubes
- 4 fractioning tubes
- 2 ampoules of activator

KMU15 PLUS KIT

- 8 extraction tubes
- 4 fractioning tubes
- 2 ampoules of activator
- 1 activation syringe
- 1 PTD 2
- 1 winged blood collection set
- 5 identification labels

10 BLISTER PACKS FOR INDIVIDUAL
TREATMENTS



KMU15 KIT

KIT KMU 16

New kit designed to carry out the treatments of the socket post-extraction in fewer steps, in a safer and simpler way.

FAST

Without the need for anticoagulant nor activator.

SIMPLE

The same product obtained, in fewer steps.

BIOLOGICAL

The formation of the fibrin membrane and the clot is faster, while still preserving the retention capacity of growth factors.



EACH TREATMENT CONSISTS OF:

- 1 winged extraction set
- 4 BTI tubes - no additives.
- 2 fractioning tubes
- 1 PTD
- 5 identification labels

2 ENDORET® EQUIPMENT*

START PTDO KIT

- Centrifuge System IV
- Plasmaterm H
- Work rack
- Activation containers



MEMBRANE SHAPER ENDORET® (PRGF®)

Anodize aluminium autoclavable device used to modelate the fibrin membrane to get the desirable thickness for the clinical application. This way, the fibrin membrane is easier to manipulate.

It consists of two moulds for creating membranes of 0.1 and 0.5 mm.



3 ENDORET® TRAINING

Exclusive training adapted to medical needs. We share our new clinical research and provide training for innovative, top-quality healthcare.



4 ENDORET® CERTIFICATION

We certify the clinical qualification and experience of our customers with our training certificates.



ADVANTAGES

OF ENDORET TECHNOLOGY®

Endoret is the technology with the most experience on the market in the development of specific protocols for tissue regeneration, a pioneering technology manufactured exclusively by BTI Biotechnology Institute.

OPTIMUM CONCENTRATION OF PLATELETS

The **right concentration of platelets** affects the final efficacy. ⁽⁴¹⁾

FORMULATION FREE OF LEUKOCYTES

The inclusion of **leukocytes** increases the pain and inflammation ⁽⁴²⁾ and accelerates the deterioration of the fibrin.

CONTROLLED ACTIVATION

Enables the formation of the fibrin matrix in situ **and the gradual release of growth factors**, maintaining its efficacy over time. ⁽⁴³⁾

AUTOLOGOUS

It is made from the patient's own blood, so **there are no known adverse effects**. ⁽⁴⁴⁾

REPRODUCIBLE

The protocol for the preparation process and its clinical application is strictly defined and tested.

VERSATILE

4 therapeutic formulations obtained in the same process means we can adapt the product to the patient's clinical needs. ^{(45) (46)}

(41) Anitua E, Sanchez M, Prado R, Orive G. The type of platelet-rich plasma may influence the safety of the approach. *Knee Surg Sports Traumatol Arthrosc.* 2012.

(42) Filardo G, Kon E, Pereira Ruiz MT, Vaccaro F, Guitaldi R, Di Martino A, Cenacchi A, Fornasari PM, Marcacci M. Platelet-rich plasma intra-articular injections for cartilage degeneration and osteoarthritis: single- versus double-spinning approach. *Knee Surg Sports Traumatol Arthrosc.* 2012.

(43) Anitua E, Sanchez M, Nurdén AT, Zalduendo M, de la Fuente M, Orive G, Azofra J, Andía I. Autologous fibrin matrices: a potential source of biological mediators that modulate tendon cell activities. *J Biomed Mater Res A.* 2006;77:285-293.

(44) Anitua E, Sánchez M, Nurdén AT, Nurdén P, Orive G, Andía I. New insights into and novel applications for platelet-rich fibrin therapies. *Trends Biotechnol.* 2006;24:227-234.

(45) Anitua E, Sánchez M, Orive G. Potential of endogenous regenerative technology for in situ regenerative medicine. *Adv Drug Deliv Rev.* 2010 Jun 15;62(7-8):741-52.

(46) Anitua E, Sánchez M, Orive G, Andía I. The potential impact of the preparation rich in growth factors (PRGF) in different medical fields. *Biomaterials.* 2007 Nov;28(31):4551-60.

SAFETY AND REGULATORY ASSURANCE

QUALITY ASSURANCE

- The ENDORET closed-technique system complies with the **highest standards of quality**.
- Both the system and the materials have the **EC health certificate** for specific application to oral surgery.

GUARANTEES OF EFFICACY

- BTI has the greatest clinical support in the world published in this field; its effectiveness is proven in **more than 100 international scientific publications**.

ADDITIONAL GUARANTEES

- BTI **certifies its customers' specific training** in the use of this technology.
- In addition, BTI guarantees the **traceability of its materials**, and helps transfer all necessary information to its patients.





bti®

Human
Technology

BTI Biotechnology Institute
San Antonio, 15 · 5º
01005 Vitoria-Gasteiz
(Álava) · SPAIN
Tel: +34 945 140 024
Fax: +34 945 135 203
pedidos@bticomercial.com

USA
1730 Walton Road
Suite 110
Blue Bell, PA 19422-1802 · USA
Tel: (1) 215 646 4067
Fax: (1) 215 646 4066
info@bti-implant.us

UK
870 The Crescent
Colchester Business Park · Colchester
Essex CO49YQ · UNITED KINGDOM
Tel: (44) 01206580160
Fax: (44) 01206580161
info@bti-implant.co.uk

GERMANY
Mannheimer Str. 17
75179 Pforzheim · Germany
Tel: (49) 723 1428 060
Fax: (49) 72314 280 615
info@bti-implant.de

ITALY
Piazzale Piola, 1
20131 Milan · Italy
Tel: (39) 02 7060 5067
Fax: (39) 02 7063 9876
bti.italia@bti-implant.it

MEXICO
Ejercito Nacional Mexicano, 351 · 3A
Col. Granada Delegación Miguel Hidalgo
México DF · CP 11520 · Mexico
Tel: (52) 55 52502964
Fax: (52) 55 55319327
bti.mexico@bti-implant.com

PORTUGAL
Praça Mouzinho de Albuquerque, 113 · 5º
4100 359 Porto · Portugal
Tel: (+351) 22 120 1373
Fax: (+351) 22 1201311
bti.portugal@bticomercial.com