



Wycombe
Dental Clinic
www.wycombedentist.com

GENERAL SERVICES

General Dentistry	NHS & Private
Amalgam fillings	From £40
Composite fillings	From £60
Gold fillings	From £300

SPECIALIST SERVICES

Wisdom teeth removal	From £150
Laser skin tag removal	From £99
Tooth Whitening for Life*	£500
Sedation*	From £150
Veneers	From £550
Fillers *	£300 per syringe
Anti-wrinkle treatment*	From £220 for 2 sites
Full mouth Rehab	Free consultation
Dental Implants *	From £995

All these services are available at competitive prices and performed by

Specialist Surgeon

*Terms and Conditions apply



Wycombe
Dental Clinic
www.wycombedentist.com

FILLINGS



WYCOMBE DENTAL CLINIC, 264 DESBOROUGH ROAD, HP11 2QR, HIGH WYCOMBE.

FOR NHS AND PRIVATE APPOINTMENTS PLEASE CALL **01494 465241**

www.wycombedentist.com

AMALGAM

Made of: A mixture of silver, tin, zinc, copper, and mercury. Mercury is nearly 50% of the mixture.

Types: Traditional (non-bonded), bonded

Used for: Fillings in back teeth

Lasts: At least seven years, usually longer

Costs: Least expensive filling

Advantages

- Amalgam fillings are strong
- Relatively inexpensive
- Filling can be completed in one visit

Disadvantages

- Doesn't match the color of your teeth
- Healthy parts of your tooth often must be removed to make a space large enough to hold an amalgam filling as it doesn't stick to teeth
- Can corrode or tarnish over time, causing discoloration where the filling meets the tooth
- Some people may be allergic to mercury or be concerned about its effects, although research shows the amount of mercury exposure from fillings is similar to what people get from other sources in the environment



GLASS IONOMER CEMENT (GIC)

Made of: Acrylic and fluoroaluminosilicate

Types: Traditional or resin-modified or hybrid composite (stronger than traditional glass ionomer; blue light is used to set the material)

Used for: Cementation for inlay fillings and crowns, fillings in front teeth or to fill areas around the necks of your teeth or on roots (root caries). It is also used for filling milk teeth and as a liner for other types of fillings.

Lasts: Few years or more

Costs: Comparable to composite resin

Advantages

- Matches the color of the teeth, not as well as composite resin.
- In some cases, no drilling is needed so useful for small children
- Releases fluoride, which can help protect the tooth from further decay
- Bond (stick) to the tooth, which helps to prevent leakage around the filling and further decay

Disadvantages

- Significantly weaker than composite resin
- Does not match your tooth color precisely



COMPOSITE RESIN

Made of: Plastic and fine glass mixture

Types: Direct fillings are placed by your dentist using a light that hardens the material. For indirect fillings, your dentist prepares the tooth, takes an impression and a laboratory makes the filling. The filling is cemented in the next visit

Used for: Aesthetic fillings and inlays

Lasts: At least five years

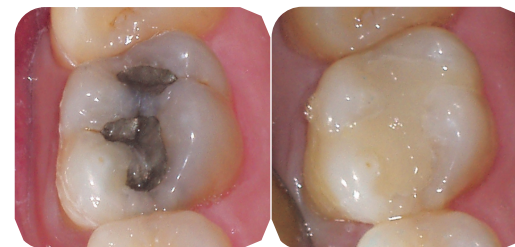
Costs: More than amalgam, less than gold

Advantages

- Matches the color of your teeth
- A filling can be completed in one dental visit. An inlay may require two visits.
- Bonds directly to the tooth, making the tooth stronger than it would be with an amalgam filling.
- Less drilling is involved
- Can be used in combination with other materials, such as glass ionomer, to provide the benefits of both materials.

Disadvantages

- Might wear with excessive use
- Shade match may not be identical
- These fillings take more time to place
- Indirect fillings and inlays take two visits



CAST GOLD

Made of: Gold alloy (gold mixed with other metals)

Used for: Inlays and onlays, crowns

Lasts: At least seven years, usually longer

Costs: More than most other materials; six to 10 times more expensive than amalgam

Advantages

- Gold doesn't corrode.
- Some people like the gold color better than the silver color of amalgam
- Gold fillings are durable enough to withstand chewing forces

Disadvantages

- You must visit the dentist at least twice to receive a gold filling. At the first visit, the dentist makes an impression of your tooth and a temporary filling is placed. The gold filling is made from the impression by the dental laboratory and is placed at the second visit.
- The cost is high because of the high cost of gold and the work involved.

